

AMSTERDAM

BEHIND OUR HISTORICAL
FAÇADE IS A CONTEMPORARY
AND WARMLY PERSONAL
BOUTIQUE HOTEL WITH A
SWISS-INSPIRED STYLE.

Swissôtel Amsterdam

Damrak 96, 1012 LP Amsterdam, The Netherlands
Tel +31 20 522 3000 Fax +31 20 522 3223
amsterdam@swissotel.com www.swissotel.com/amsterdam

swissôtel AMSTERDAM

LOCATION

HISTORIC-MEETS-CONTEMPORARY SANCTUARY IN DAM SQUARE

A fusion of historic 19th century architecture and contemporary Swiss design awaits you at Swissôtel Amsterdam. Our prime location in Dam Square puts you at the heart of the bustling city of Amsterdam and is the perfect base to visit shops, museums and restaurants or take in the ambience from the comfort of our terrace. We value wellbeing and place great importance on having a healthy mind, body and spirit – especially when travelling. Discover the real Amsterdam and stay fit with our Vitality Guide. Ask the concierge for a printed copy or download our digital, interactive maps and explore the best of the city's surroundings and main attractions by foot.



GUEST ROOMS

TRANQUILITY IN THE HEART OF THE DAM

Our contemporary yet sophisticated décor helps you to feel relaxed in our 111 guest rooms, including 17 suites. We have gone the extra mile to provide a tranquil space for you to unwind from the bustle of Amsterdam with soundproofing in each room. At Swissôtel we believe there is nothing better than a good night's sleep. Choose from the wide range of pillows on our à la carte pillow menu and enjoy the feeling of crisp white Frette bed linens. Our Swiss Advantage rooms offer business travellers the benefits of a large desk and on tap Nespresso coffee.

RESTAURANTS & BARS

WORLD CUISINE ON YOUR DOORSTEP

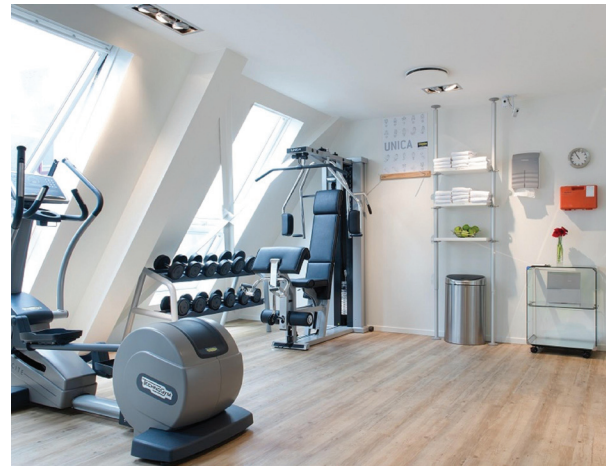
Swissôtel Amsterdam's outsourced restaurant, deli and bakery - ROYAL98 is a food concept in the centre of Amsterdam where Italian pasta, thin-crust wood oven pizza and fresh bread play a central role. Guests can choose from the all-day menu and be ensured of fresh and organic ingredients from local suppliers. Enjoy the summer sun on the unique terrace on Dam Square or cold winter days under the heated parasol or in front of the fire place.



FITNESS

WORKING OUT IN THE DAM

Take a breather from your busy day to enjoy our complimentary fitness centre, open 24-hours a day. State-of-the-art TechnoGym equipment will make your workout effortless and enjoyable. You can also explore the history of Amsterdam by renting one of our Swissotel bikes or taking a stroll or jog along one of our jogging routes.



MEETINGS & EVENTS

UNIQUE BUSINESS OR SOCIAL SETTING

Swissôtel Amsterdam offers two air-conditioned conference suites with city views for up to eight guests. For larger events, we will provide an event specialist to help you organise your meeting or function at two nearby venues: Beurs van Berlage and De Industriële Groote Club. Both venues boast impressive historical context and are just a few steps from our hotel.

BUSINESS CENTRE

FOR ALL YOUR BUSINESS NEEDS

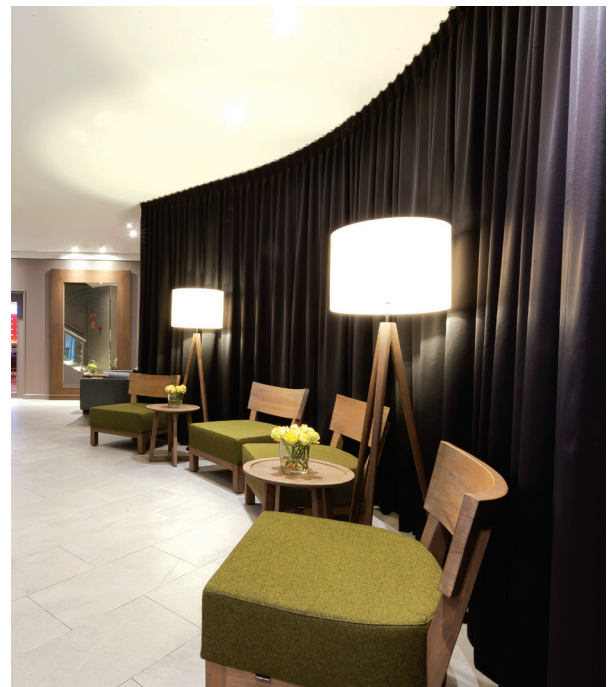
Everything you need to conduct your business remotely and effectively offering Apple computers and high-speed internet. One can also enjoy healthy refreshments and delicacies whilst working in our business centre.



FACILITIES & SERVICES

SWISSÔTEL AMSTERDAM HIGHLIGHTS

- Centrally-located 4-star boutique hotel
- 111 beautiful and contemporary rooms and suites
- 20-minute drive from Amsterdam Schiphol Airport
- Short walk to Amsterdam Central Station
- Restaurants, bars, shops and museums on the doorstep
- Professional conference, meeting and event space for up to 8 guests
- Business centre
- Close to two larger conference, meeting and event venues: Beurs van Berlage and De Industriële Groote Club
- Complimentary wireless internet
- Fitness centre and bike rental
- 24-hour concierge service



CAPACITY CHART

| MEETING ROOMS | AREA M ² | L | W | H | BOARD ROOM |
|-----------------|---------------------|-----|---|-----|------------|
| LEVEL 1 | | | | | |
| Meeting Suite 1 | 52 | 7.5 | 7 | 3.2 | 8 |
| Meeting Suite 2 | 52 | 7.5 | 7 | 3.2 | 8 |